



fall 2022

THANK FOR
GOD
B.F.S.

Above: A note from a guest as part of their “Gratitude Tree” describing what they were thankful for.

Brother Francis Shelter

You provide a safe place for our neighbors

Neighbors from all walks of life are finding safety at Brother Francis Shelter, thanks to your dedicated support.

At Brother Francis Shelter we serve a diverse population of guests, from workforce-ready adults who can’t quite keep pace with rent and fuel

inflation to elders in their retirement, facing the setbacks that come with advanced age. Our community is feeling the strain of inflation, the

aftermath of the pandemic, and the soaring prices for housing, food, and fuel. In these difficult times, your support for the guests at Brother Francis Shelter is invaluable. **Your continued commitment to our neighbors provides a safety net of support, to prevent a small setback from becoming a major crisis.**



Left: Theresa is 72, retired, and a guest at Brother Francis Shelter. Read her story and others on the next page.

Continued on next page...

...Continued from cover

Here are the stories of three current guests at Brother Francis Shelter. Each story is unique, reflecting the diverse range of people served by Brother Francis Shelter and the historically high need in our community across different circumstances.

Theresa

Theresa, 72, worked for decades in housing development. She was retired and living in the Mat-Su Valley, but needed to travel to Anchorage frequently for arthritis treatments. Eventually it became too expensive to travel to Anchorage several times per week. Theresa moved into Anchorage but couldn't manage the rising rent on her own and took shelter at Brother Francis Shelter.

David

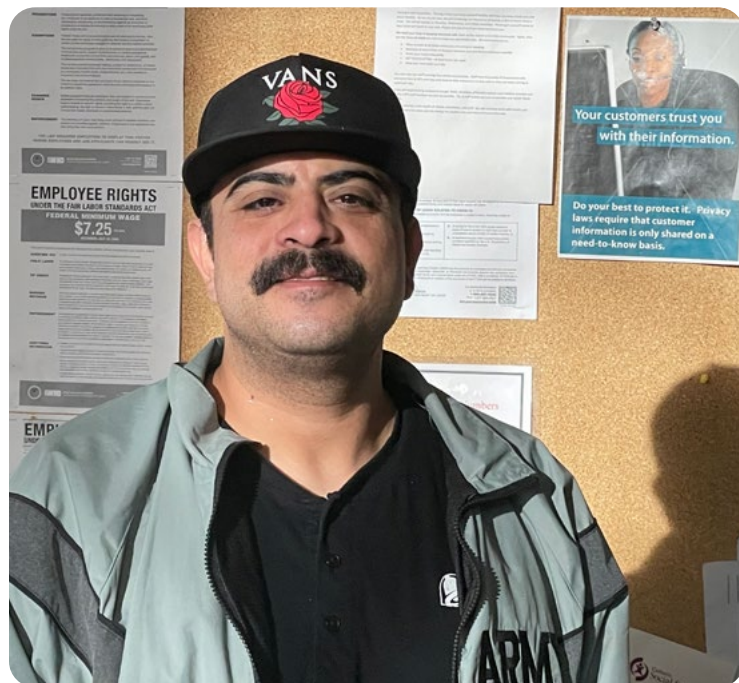
David is an experienced cook, a veteran of several prominent restaurants around Anchorage. Like many in the service industry, David faced many setbacks during Covid and lost income, which led to him staying at Brother Francis Shelter. Even though he's worked during his stay at Brother Francis Shelter, the skyrocketing costs of rent and fuel—along with Anchorage's limited public transit—have prevented David from securing housing without assistance.

Douglas

Douglas retired from a career with a construction union. After his wife passed away, he couldn't afford their rent on his own and had to live in a temporary and unsafe place. Without a safe place to recover, a routine surgery developed life-threatening complications. After a second emergency surgery, Douglas was discharged to Brother Francis Shelter Medical Respite.

Thanks to you, Brother Francis Shelter provides a supportive environment that can address a wide range of circumstances.

Left: David is an ambitious and an experienced cook. Your support provides a safe environment for David to stay while he continues to work and plan out his catering business.



As winter approaches, Brother Francis Shelter is raising capacity to serve our community

Thank you for adapting to the changing needs in our community.

As the winter weather settles in, Brother Francis Shelter is helping to meet the need in our community. The shelter has added additional beds, bringing its maximum capacity up to 120.

During the pandemic, Brother Francis Shelter operated as a shelter dedicated to serving medically fragile guests, providing a less crowded and more wheelchair-accessible environment. We saw the tremendous impact that providing shelter in a medically supportive setting can have for our neighbors in need, especially for our

elderly guests, giving them the resources and capacity to meet their healthcare needs and work toward permanent stability. This success led us to open Complex Care, with the help of our partners, to carry on the work that Brother Francis Shelter undertook during the pandemic.

Now, with the cost of living rising and many of our neighbors struggling to make ends meet, Brother Francis Shelter is serving our community in the best way that it can: by making our shelter available to anyone regardless of health or ability and adding

additional beds so that none of our neighbors will be left unsheltered in the cold.

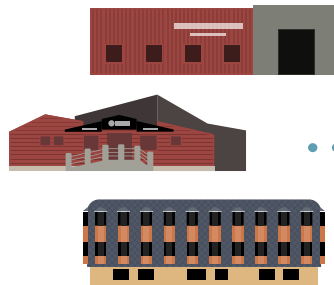
With the addition of Complex Care, Brother Francis Shelter's added capacity, and the continued operation of Clare House, Catholic Social Services continues the work we began in 1983, providing more than 250 emergency shelter beds to our community and an entry point to deeper services. With multiple specialized shelters, we are ensuring that our neighbors in need have access to specialized care that can fit their circumstances.

The Pathway to Permanent Stability

Re-establishing permanent stability requires many steps. Thanks to you, shelters provide an immediate answer to crisis and an entry point to deeper services.

IMMEDIATE: Shelter Services

Shelters meet a person's immediate needs: a roof over their head, food to eat, a safe place to sleep. Shelter provides the stable foundation for them to **connect with deeper services, from case management to healthcare.**



Clients also connect with CSS case management through referrals from partners, outreach, and direct intake.

MID-TERM: Case Management

Case management helps clients find solutions to the problems that led to crisis to begin with, **from securing housing and income to overcoming legal, logistical, or custody obstacles.**



Family Skills classes teach parenting skills to clients and help them build peer support.

LONG-TERM: Social & Emotional Support

Social & emotional support builds a person's peer network, family health, and resilience, so they can **maintain permanent stability and foster it in the people around them.**



Brother Francis Shelter's Most Needed Items

- New coats
- New sweatshirts
- New socks
- New gloves
- New underwear
- New or used boots
- New or used warm clothing